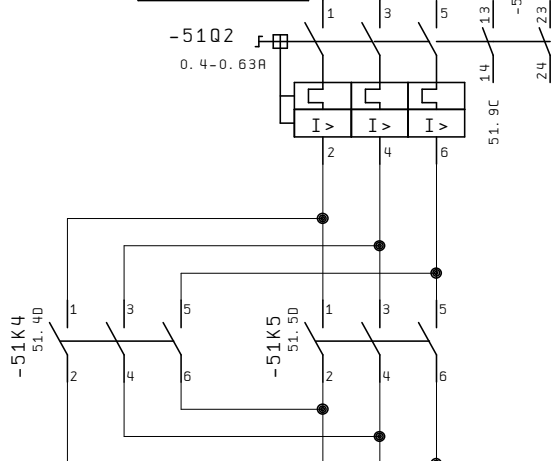


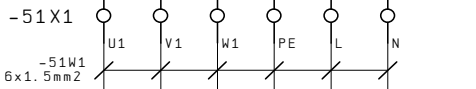
40. 2A 35F2\_1 → 61. 0A  
 40. 2A 35F2\_2 → 61. 0A  
 40. 2A 35F2\_3 → 61. 0A  
 40. 2A 35F2\_N → 61. 0A

Absperrklappe  
Zulauf

-51Q2  
0. 4-0. 63A



40. 1E PE → 56. 0D

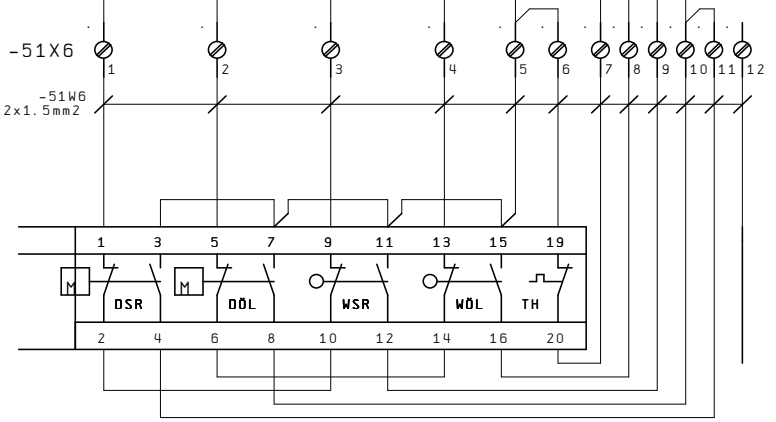
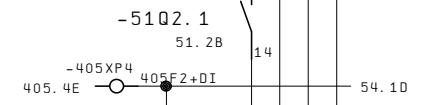
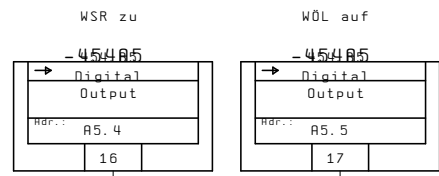
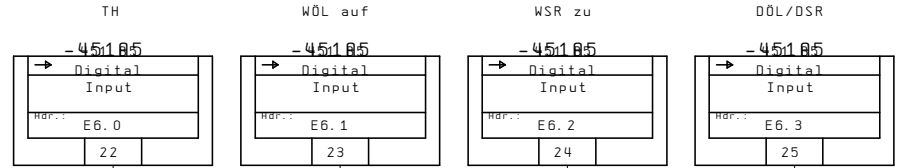
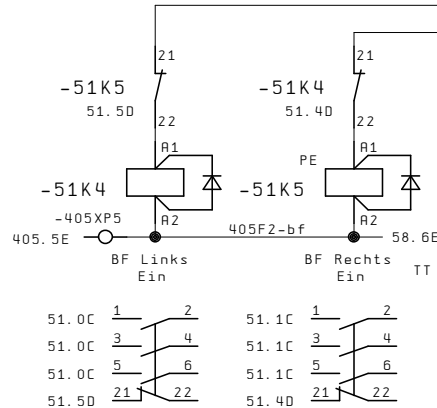
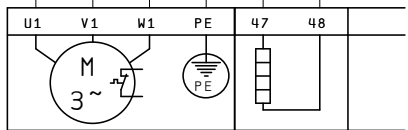


+EXT

-51Y1

Absperrklappe Zulauf

Motor Fabr. Typ	AUMA SG05.1 3x400V 50Hz
P	0.90 kW
In	0.50 A
n	2800 1/min



Index a	Datum	Name / Visum	Datum	28.04.06	Stahl Gerlafingen	Entzunderungsanlage	Zeichnungs Nr.	=
b			Bearb.	WeV	4563 Gerlafingen	Pumpstation R180S		+SPS
c			Datum	Gepr.	Pumpstation R180S	Absperrklappe Zulauf Tank	Schema Nr.	Version
d			Bearb.	RST	Urspr.	Ers. f.	06 2305 10	Blatt 51
	0		Gepr.	23 Jun. 2006	Entzunderungsanlage3		Pzter Meister AG	8
Anderung	Datum	Name	Norm	Urspr.	Ers. f.	Ers. d.	8247 Flurlingen	052711

Bl. 1000  
1000 Bl.