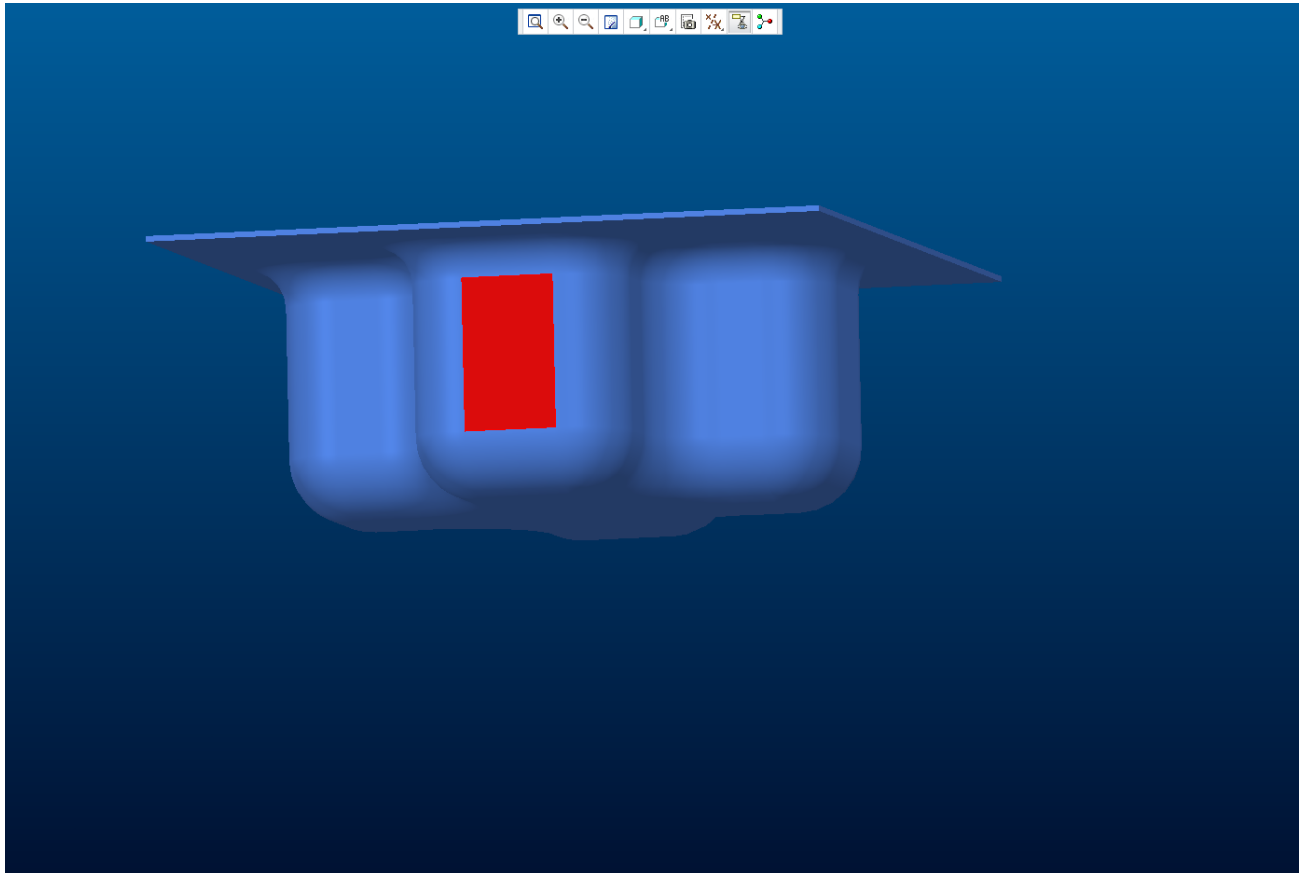
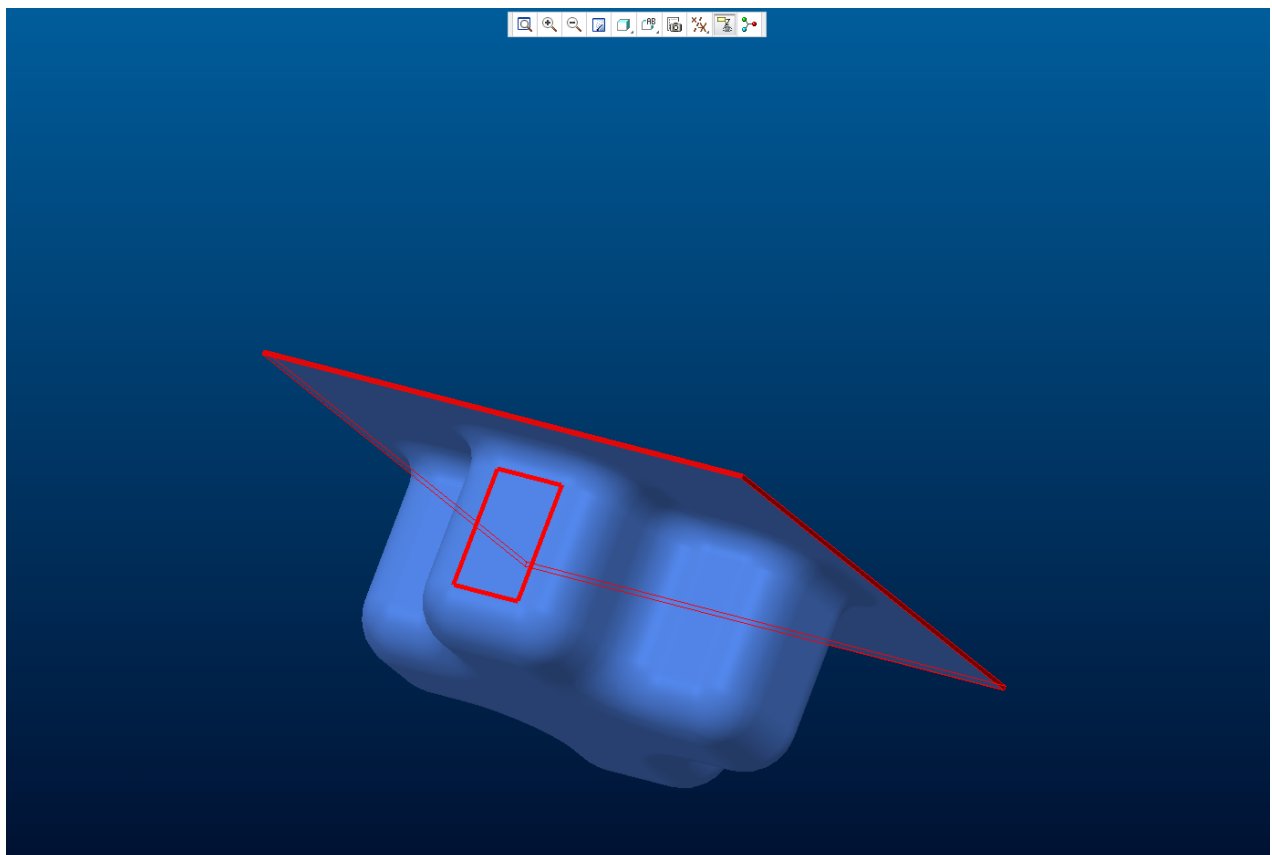


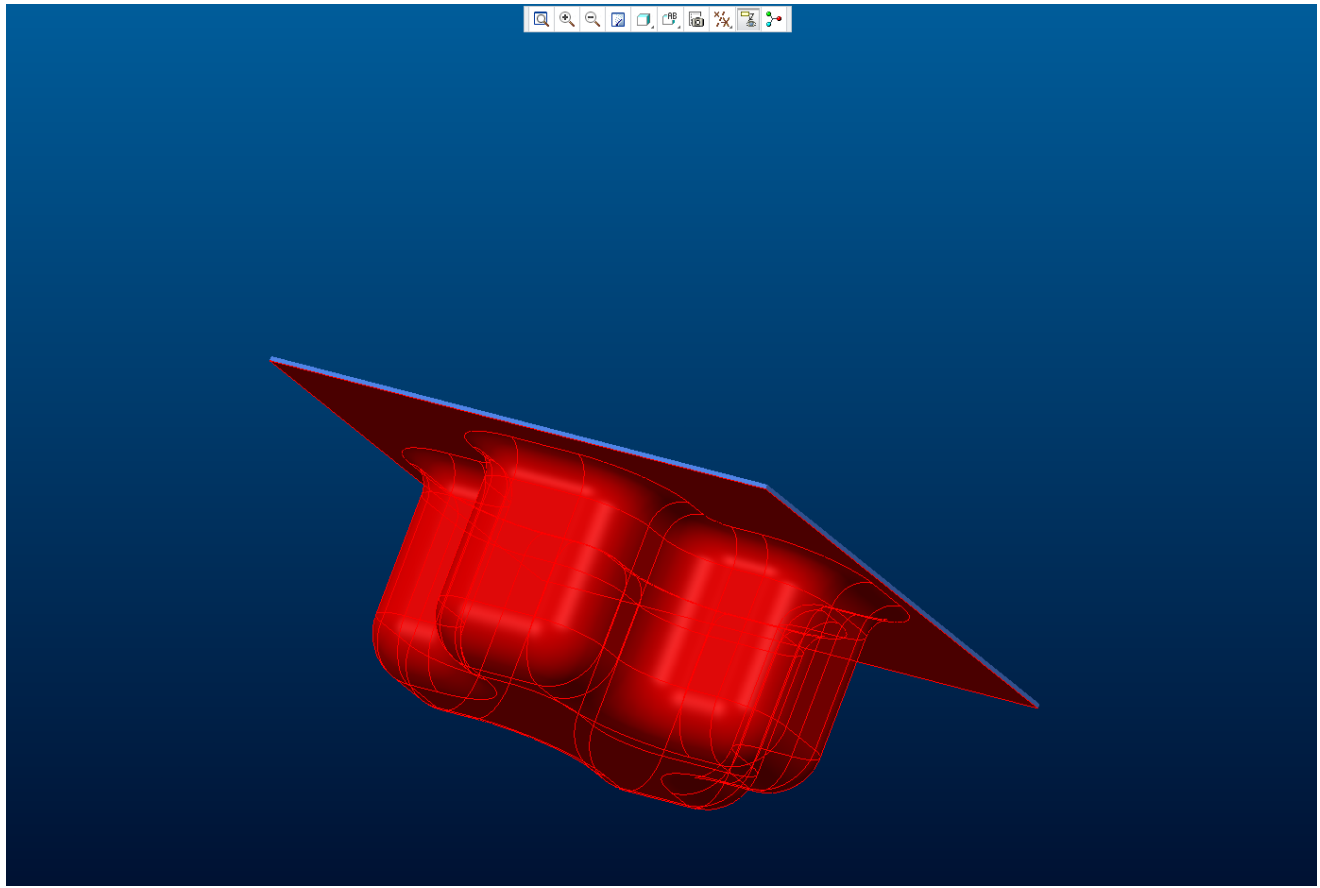
Eine Fläche der Aussenform anwählen



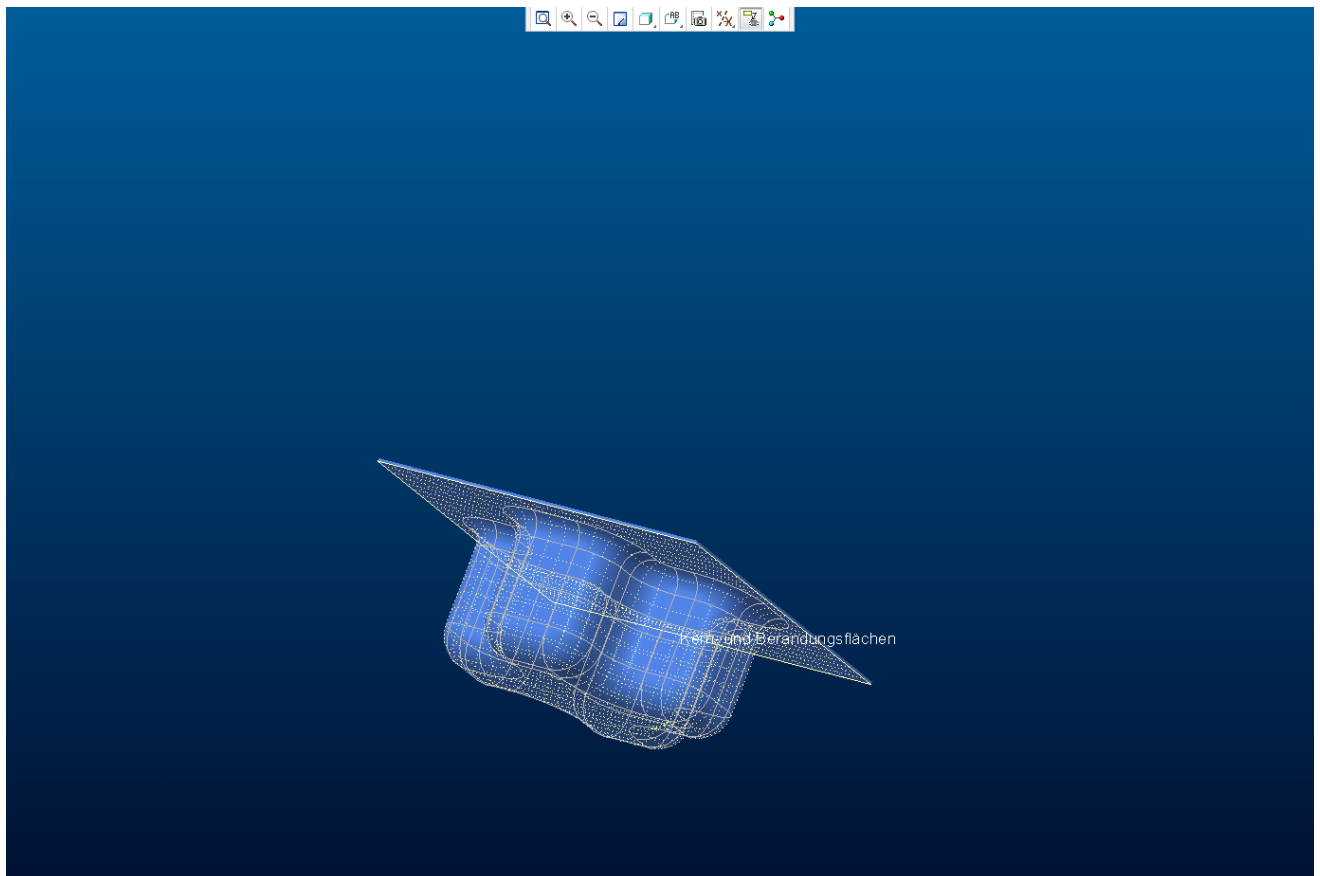
Mit gedrückter "Shift" Taste die Berandungsflächen wählen



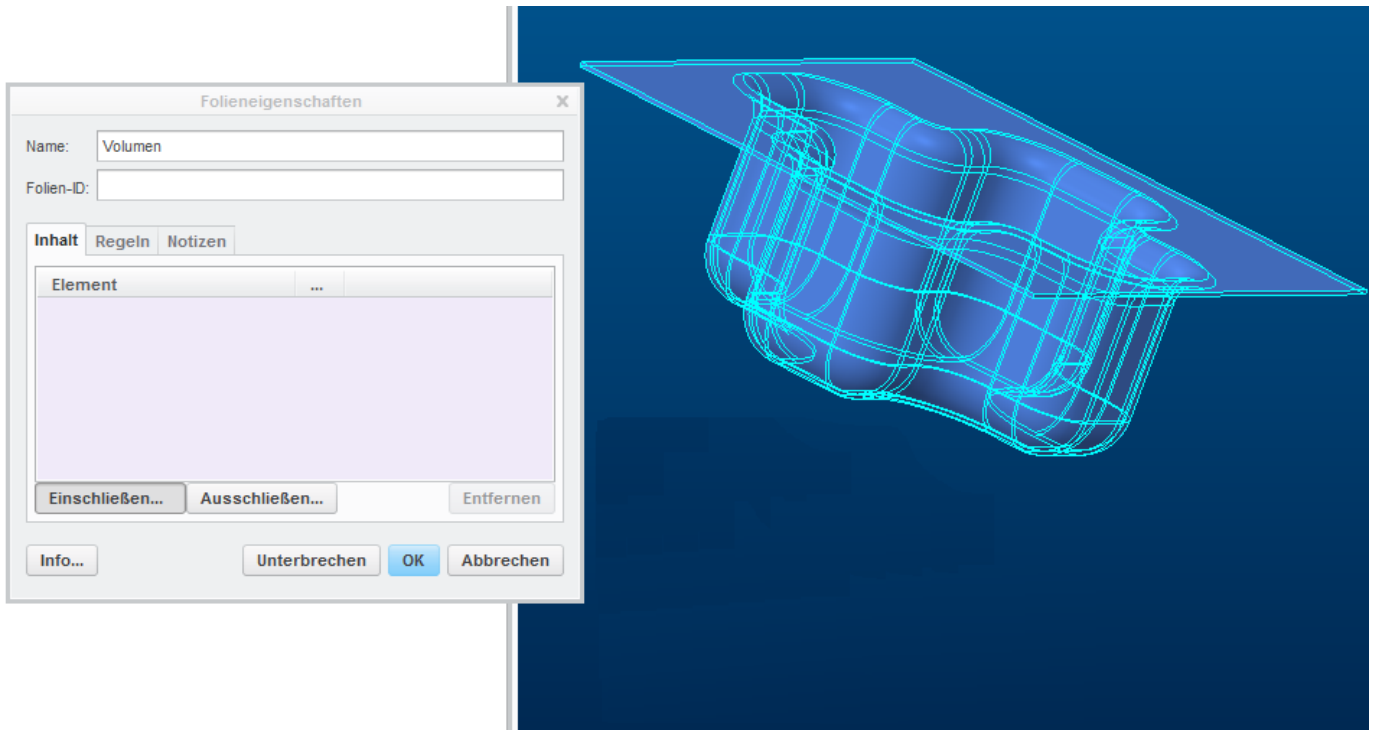
"Shift" Taste loslassen - Ctrl C - Ctrl V.



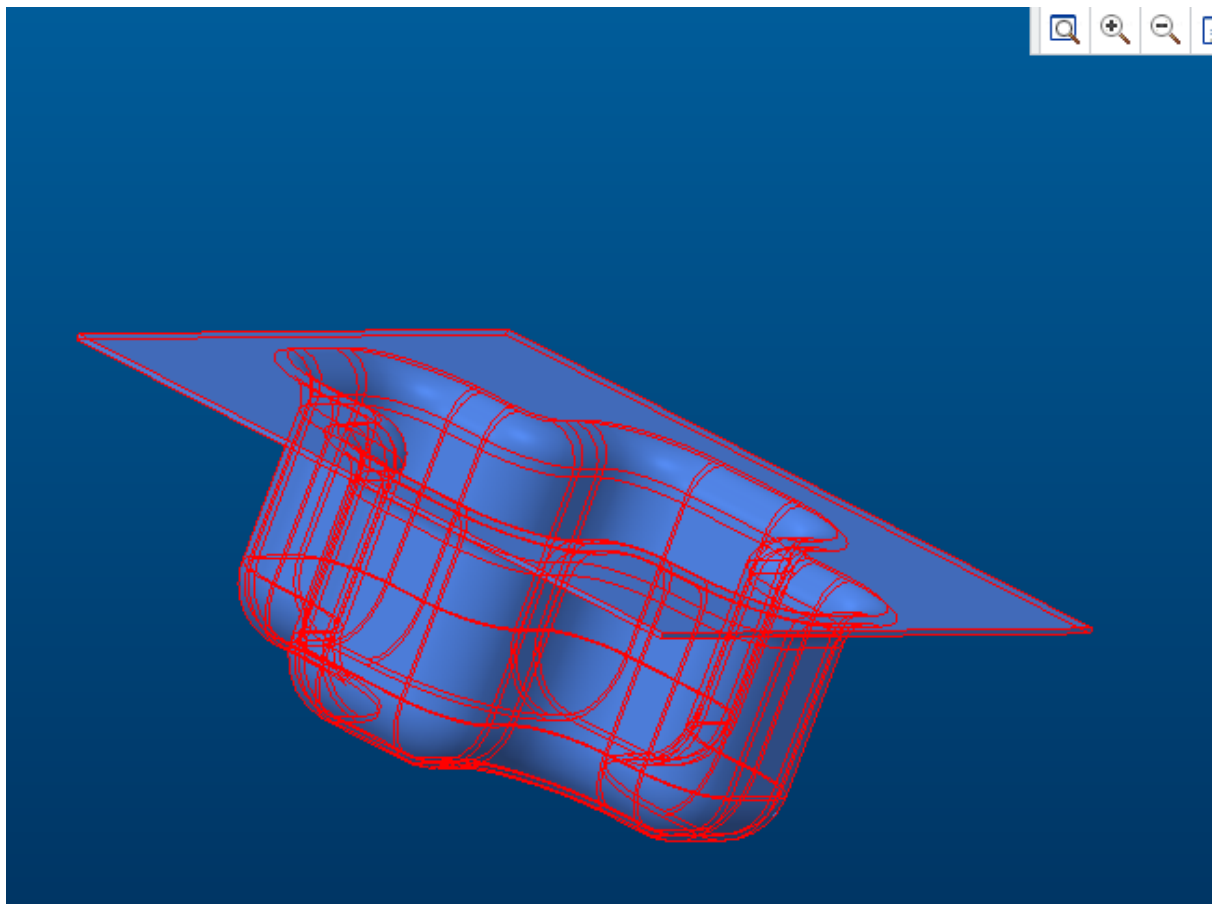
Damit ist die Aussenfläche kopiert



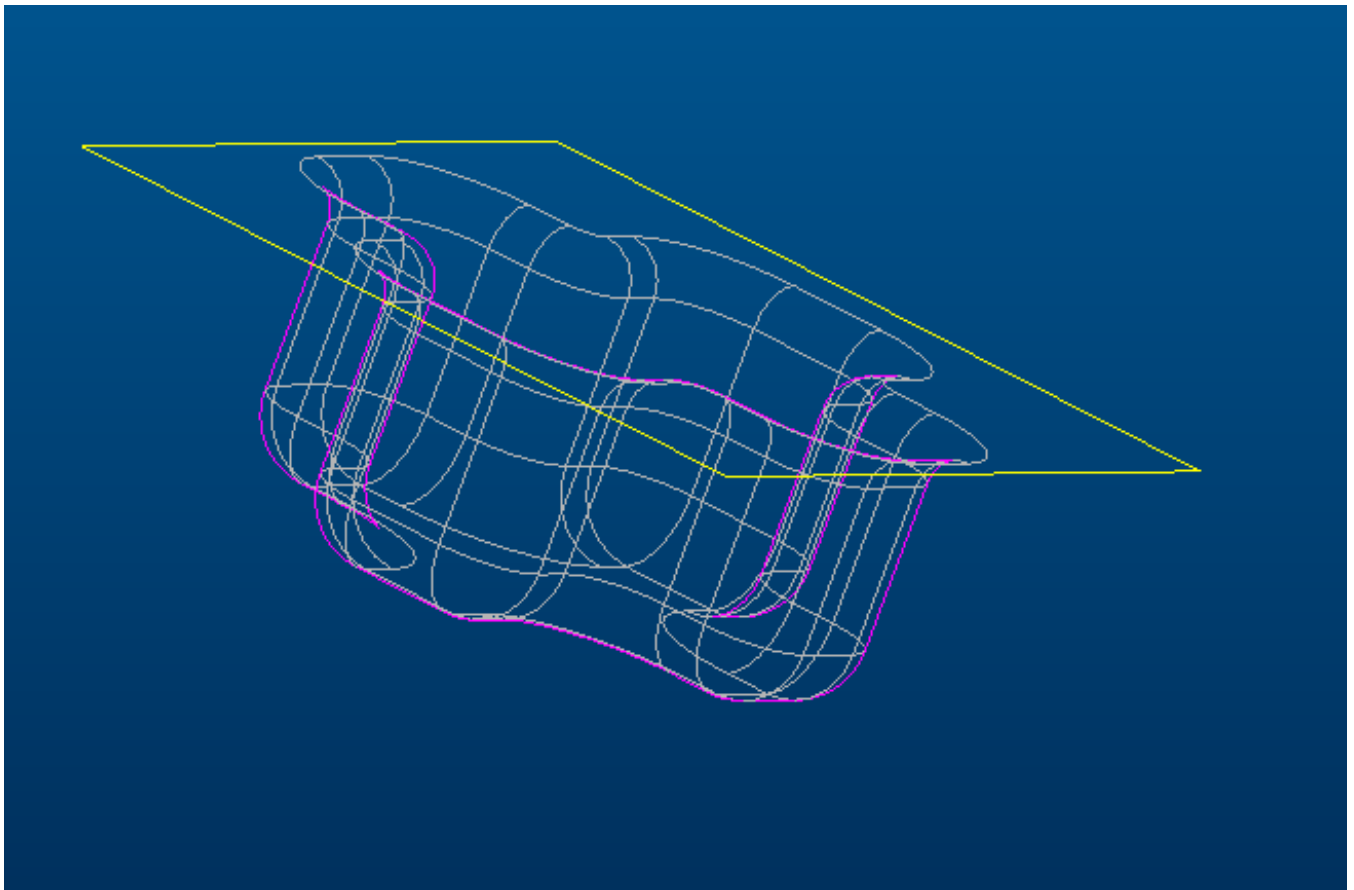
Neue Folie anlegen - Das Volumen dort platzieren



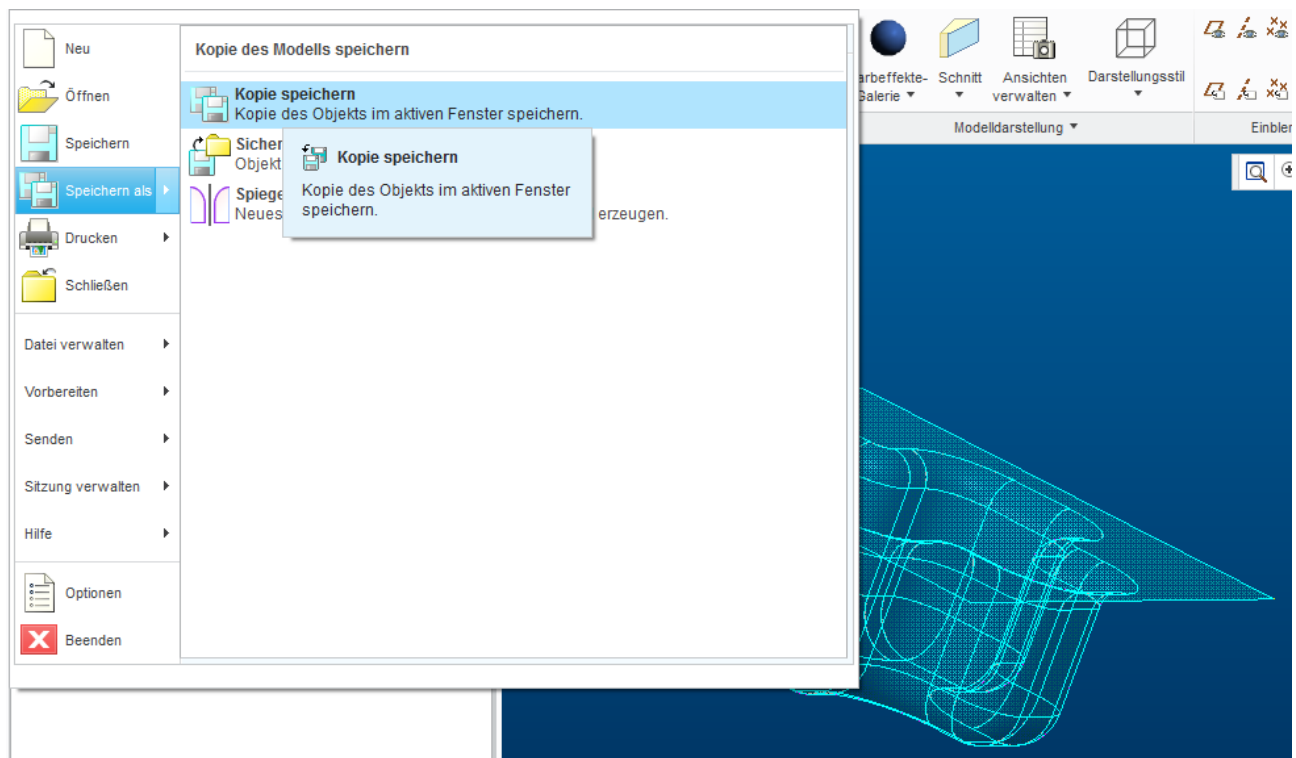
Folie Volumen ausblenden.....

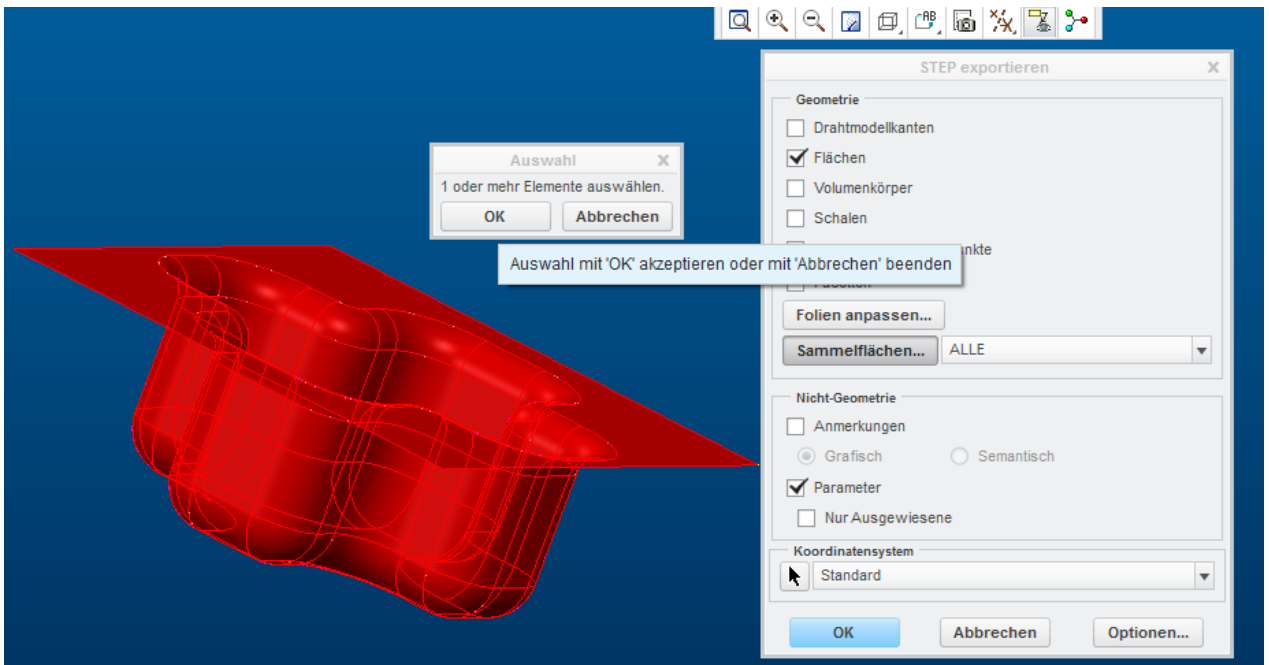
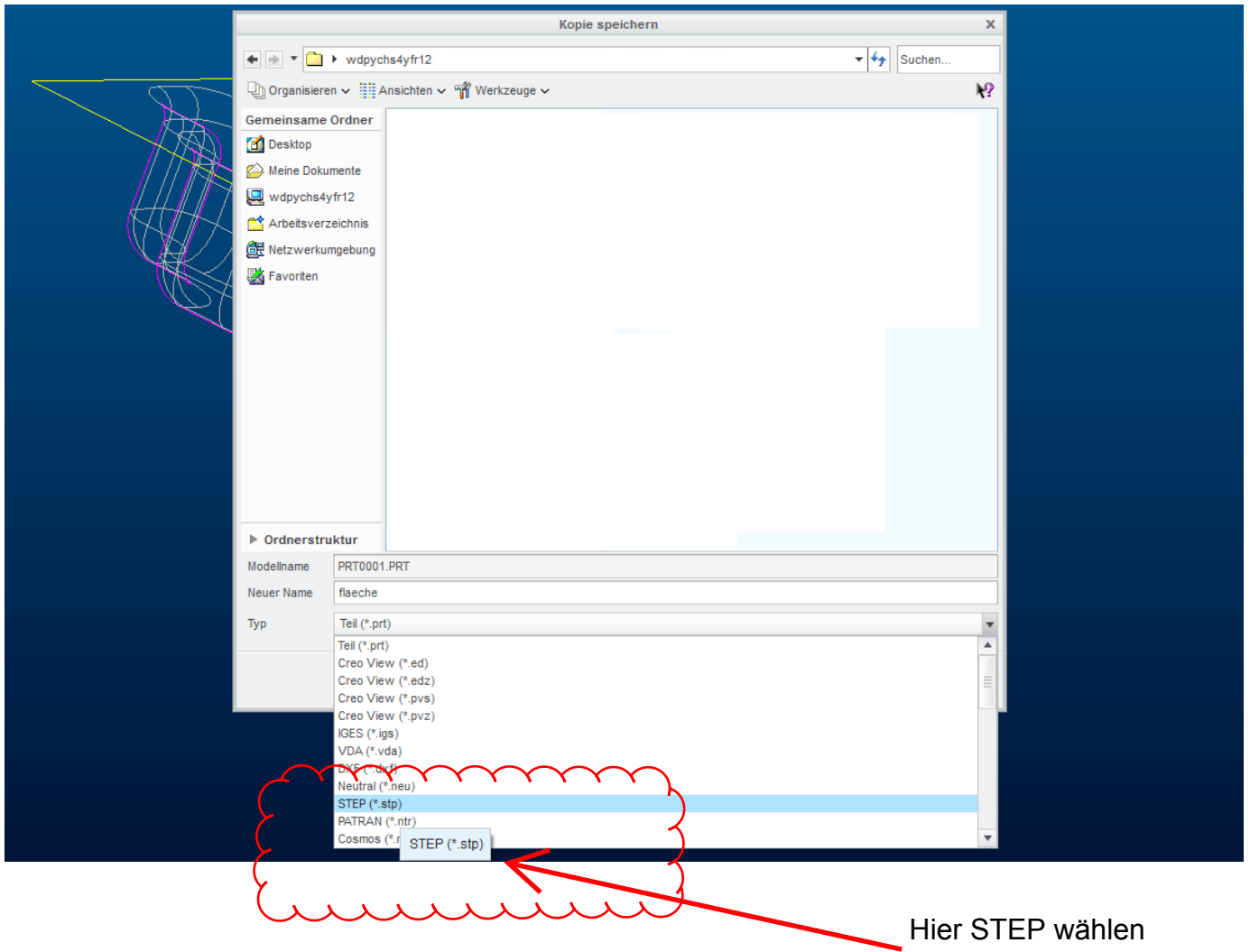


Aussenfläche separiert.
Fertig



.....nun könnte man diese als .stp-file exportieren.
Kopie speichern als.....





Jetzt kann man in jedem beliebigen Part diese Fläche wieder importieren