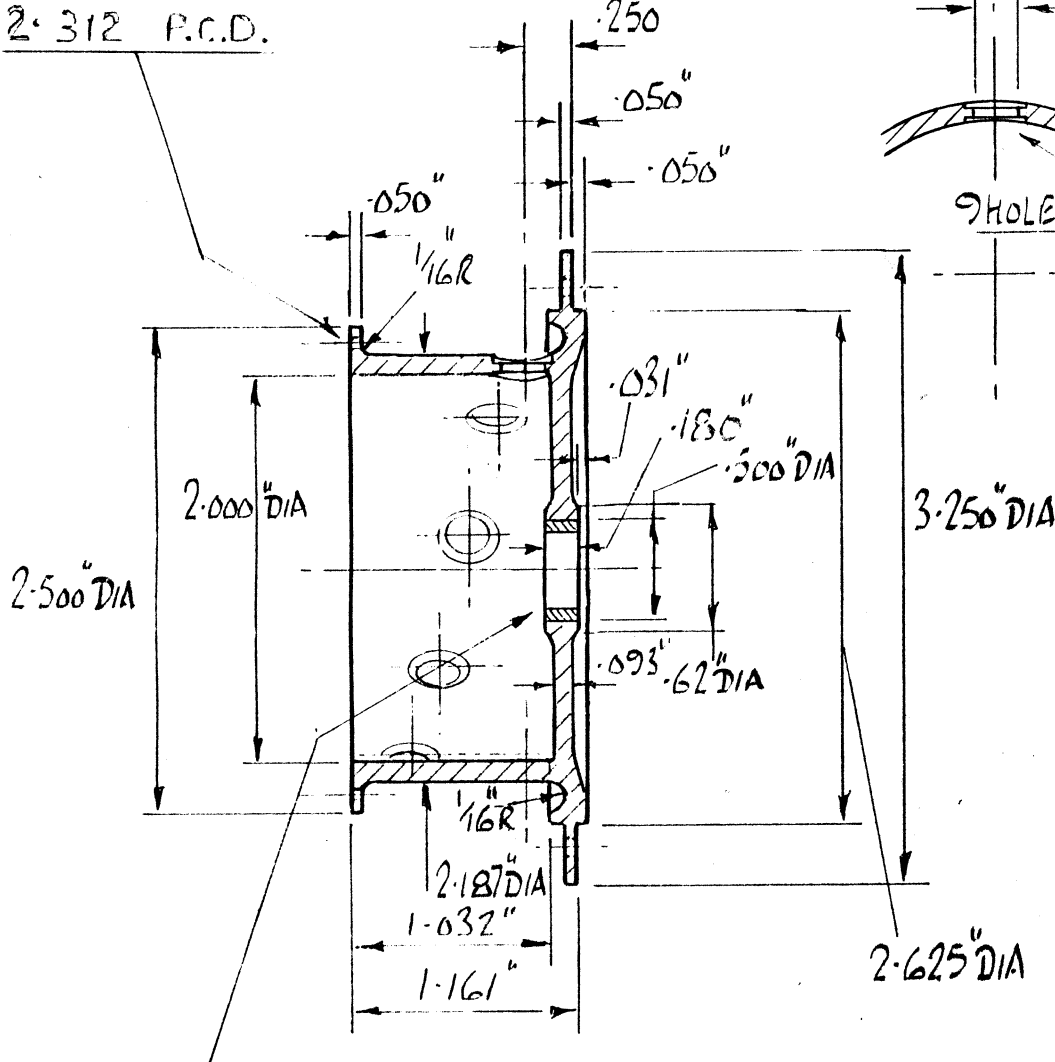
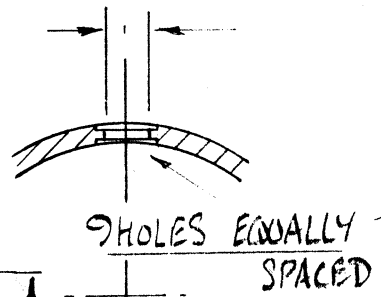


14 HOLES TAP 10 BA
 EQUALLY SPACED ON
 2.312 P.C.D.

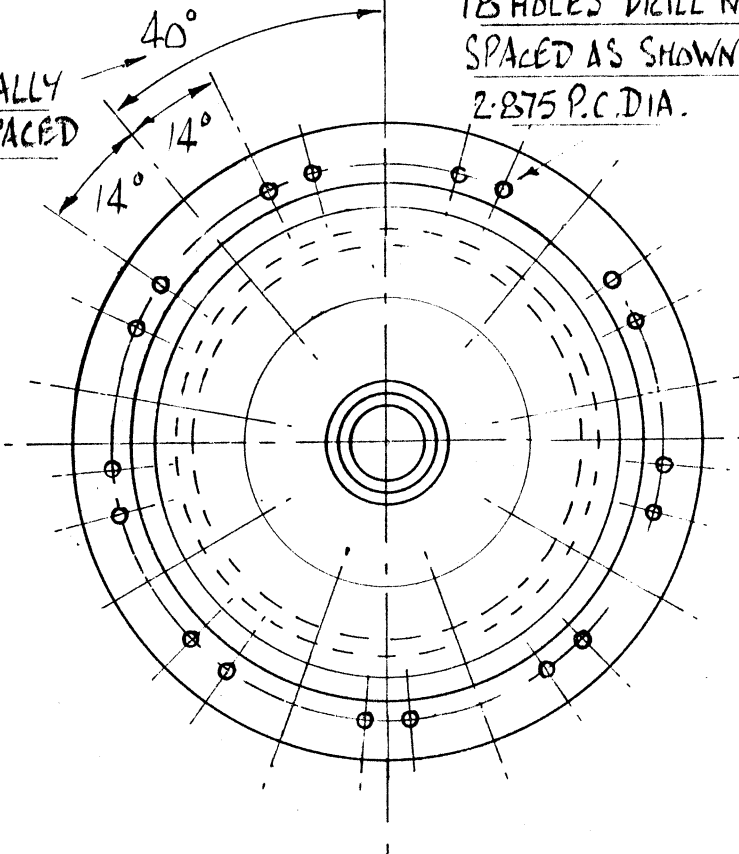


.250" DIA. C'BOPE .312" DIA. BOTH SIDES
 REMOVE MIN. METAL



MASTER ROD HOLE [K91]
 HOLES NUMBERED CLOCKWISE
 SEE DRG. NO 15A. FOR DETAILS

18 HOLES DRILL NO 43
 SPACED AS SHOWN ON
 2.875 P.C.DIA.



PHOSPHOR BRONZE BUSH
 .500" O/DIA x .375" I/DIA.
 .156" WIDTH

MATERIAL: MILD STEEL

THE "GNOME" AERO ENGINE
 ITEM. NO 15 FRONT TAPPET ROD HOUSING
 SCALE: FULL SIZE

.160" PITCH

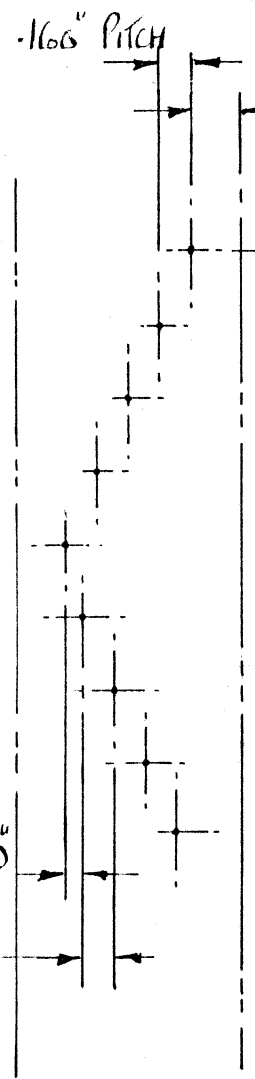
.250" REF

MOUNTING FACE ITEM NO 15

MASTER ROD [T.D.C.]

.080"

.160" PITCH



THE "GNOME" AFRO ENGINE

ITEM NO 15A LAYOUT OF TAPPET GUIDE HOLES