

Whats new in MechSoft for Inventor v8?

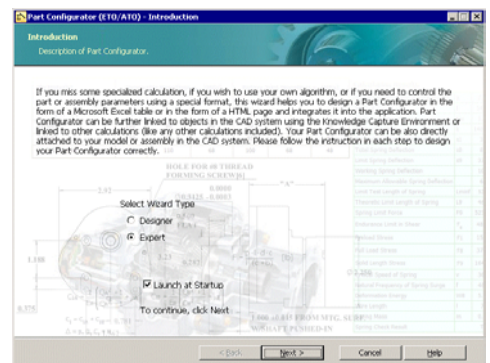
Available from 28th November 2003, The new product runs with Autodesk Inventor v8 or Autodesk Inventor v8 Professional and in addition to the features previously available, includes:

- **Part Configurator**
- **WonderDrop**
- **New Multi Component Wizards**
 - **V-Belt Component Wizard**
 - **O-Ring Component Wizard**
 - **Spur Gearing Component Wizard**
- **Ability to automate suppressing and unsuppressing part features**
- **Enhanced Settings Configuration**

Part Configurator (ETO/ATO)

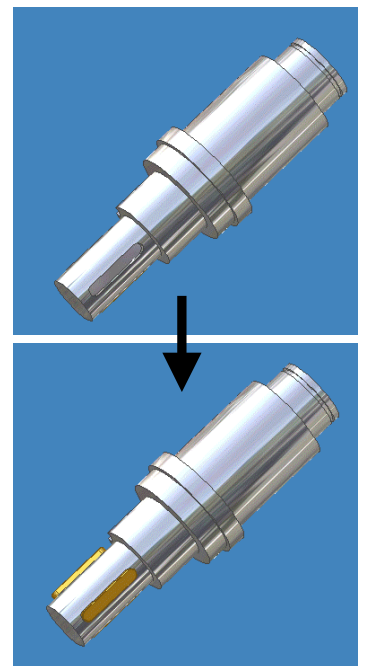
The powerful new Part Configurator allows users to define their own parts based on complex parameters or algorithms. This enables parts to be driven from geometric or mechanical data contained within Microsoft Excel tables or HTML pages.

The part Configurator works seamlessly within the MechSoft environment, with all the relevant data being directly attached to the CAD model and allowing parts to be linked directly to Knowledge Capture environment or to other MechSoft calculation or component wizards.



WonderDrop

The latest MechSoft products contain the state of the art WonderDrop technology, dramatically reducing design time and radically simplifying the work of the design engineer. Using simple drag & drop methodology, components can be dragged from the Knowledge Centre browser bar and „dropped“ into an existing assembly. The WonderDrop technology then captures the hidden intelligence of the associated components and ensures that the newly inserted component is the correct size, orientation and position. In addition to correctly positioning the correct size component, Wonder drop ensure that the correct assembly constraints are placed and that associations are also automatically represented in the Knowledge Capture Environment.





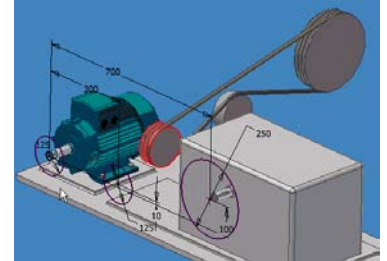
In addition to working with individual components, WonderDrop can manipulate groups of components, nuts, bolts or keys for example. Parts with the most suitable dimensions would then be selected from the group and would be inserted into the assembly. Using MechSoft Database Structure Editor you may then create new folders within the Knowledge Center folder structure.

Multicomponent Wizards

With the new advanced Multi Component Wizards it is now possible to insert a group of associated parts, grouped together into the assembly with one command. New Multi Component Wizards include V-Belts, O-Rings and Spur Gearing.

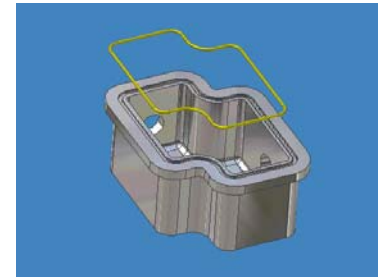
V-belts Component Wizard

The V-belt Component Wizard now inserts all pulleys at once, in the correct position and generates the required belts. All components are then automatically mated together.



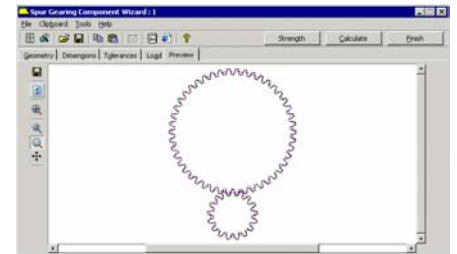
O-Rings Component Wizard

The O-Ring Component Wizard now enables the design and creation of O-Rings and the associated groove, to suit any user defined shape or profile.



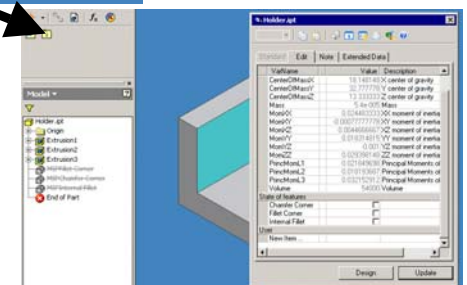
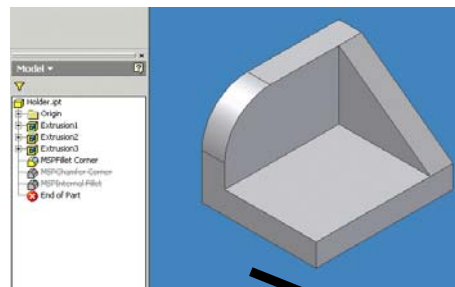
Spur Gearing Component Wizard

A new **Preview** tab has been added to the Spur Gearing Component Wizard for gears with external teeth. Within this tab you can preview the spur gear, prior to design.



Suppressing/Unsuppressing Feature Support

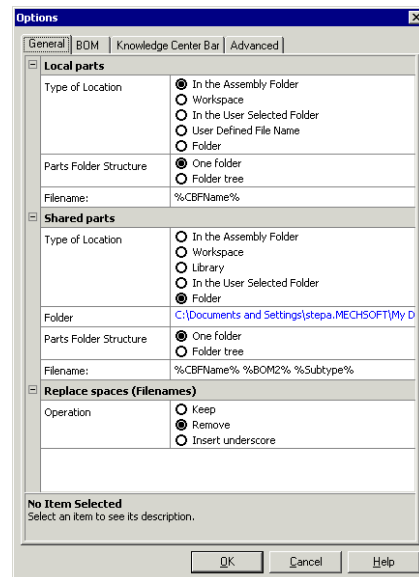
Using the MSP prefix mark, selected features can be suppressed or unsuppressed within the part. It is also possible to set this option using Part Configurator





Settings Configuration

The **General** tab within the MechSoft **Options** window has been changed dramatically. Local and Shared parts saving has been modified to adjust part saving according to Autodesk Inventor projects. It is also possible to edit the template for creating filenames.



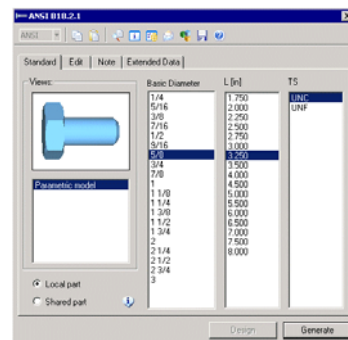
Bolted Connection Toolbar

A new toolbar has been added into Autodesk Inventor to allow users to work with bolted connections faster and more efficiently.



3D Preview in Part Dialog Box

In the part dialog box it is now possible to select a 3D part preview for better visibility of components. In the **General** tab of the **Knowledge Center Options** menu the new **Use 3D preview in part dialog** option has also been added.



For more information about MechSoft for Inventor v8, please go to www.mechsoft.com or email sales.europe@mechsoft.com