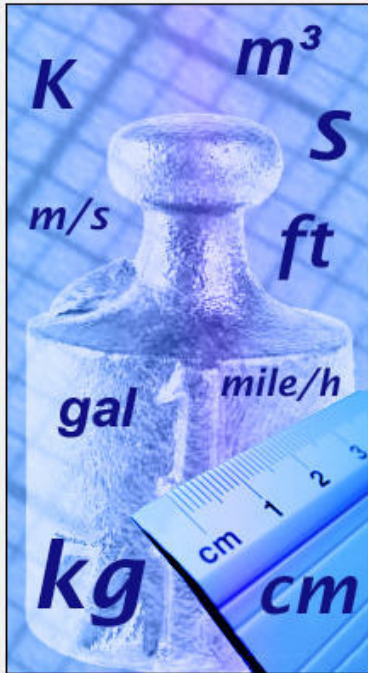


Wizard - Unit System



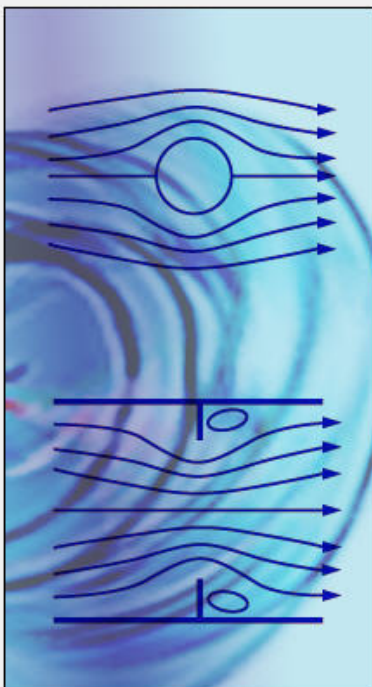
Unit system:

System	Path	Comment
CGS (cm-g-s)	Pre-Defined	CGS (cm-g-s)
FPS (ft-lb-s)	Pre-Defined	FPS (ft-lb-s)
IPS (in-lb-s)	Pre-Defined	IPS (in-lb-s)
NMM (mm-g-s)	Pre-Defined	NMM (mm-g-s)
SI (m-kg-s)	Pre-Defined	SI (m-kg-s)
USA	Pre-Defined	USA

Create new Name:

Parameter	Units	Decimal Places	1.0 Unit SI =
Main			
Pressure & stress	Pa	0	1
Velocity	m/s	1	1
Mass	kg	3	1
Length	m	3	1
Temperature	°C	1	-273.15
Physical time	s	1	1
Geometrical Characteristic			
Loads&Motion			
Heat			

Wizard - Analysis Type



Analysis type:
 Internal Exclude cavities without flow conditions
 External Exclude internal space

Physical Features	Value
<input checked="" type="checkbox"/> Heat conduction in solids	<input checked="" type="checkbox"/>
Heat conduction in solids only	<input type="checkbox"/>
Radiation	<input type="checkbox"/>
Time-dependent	<input type="checkbox"/>
<input checked="" type="checkbox"/> Gravity	<input checked="" type="checkbox"/>
X component	0 m/s ²
Y component	-9.81 m/s ²
Z component	0 m/s ²
Rotation	<input type="checkbox"/>

Reference axis:

Wizard - Default Fluid



Fluids	Path
Gases	
Acetone	Pre-Defined
Ammonia	Pre-Defined
Argon	Pre-Defined
Butane	Pre-Defined
Carbon dioxide	Pre-Defined
Chlorine	Pre-Defined
Ethane	Pre-Defined
Ethanol	Pre-Defined
Ethylene	Pre-Defined
Fluorine	Pre-Defined

Project Fluids	Default Fluid
Air (Gases)	<input checked="" type="checkbox"/>

Flow Characteristic	Value
Flow type	Laminar and Turbulent
Humidity	<input type="checkbox"/>

New... »

Add

Remove

»

< Back Next > Cancel Help

Wizard - Default Solid



Solids	Path
Alloys	
Steel Stainless 321	Pre-Defined\Alloys
Glasses and Minerals	
Metals	
Steel Stainless 321	
Non-isotropic	
Polymers	
Semiconductors	

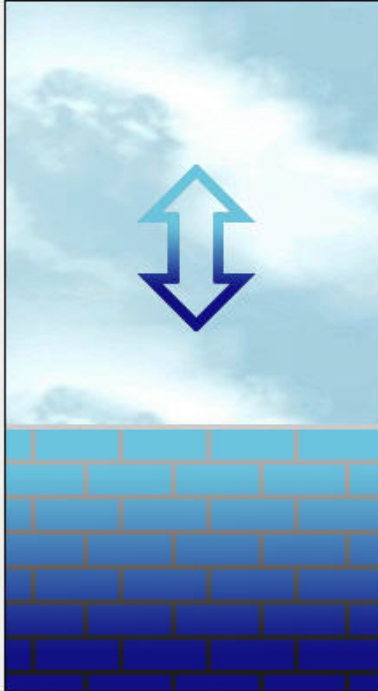
Default solid: Steel Stainless 321

New... »

»

< Back Next > Cancel Help

Wizard - Wall Conditions

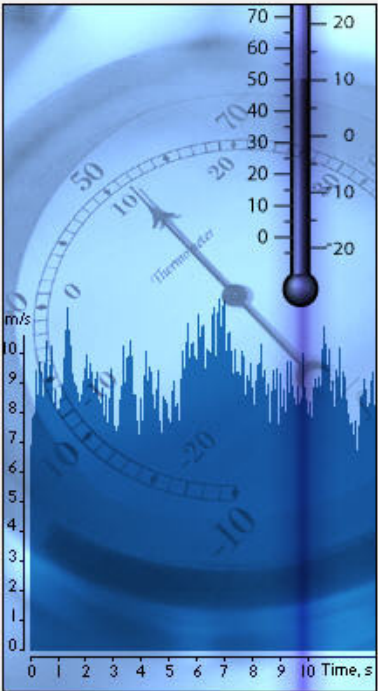


Parameter	Value
Roughness	0 micrometer

Dependency...

< Back Next > Cancel Help

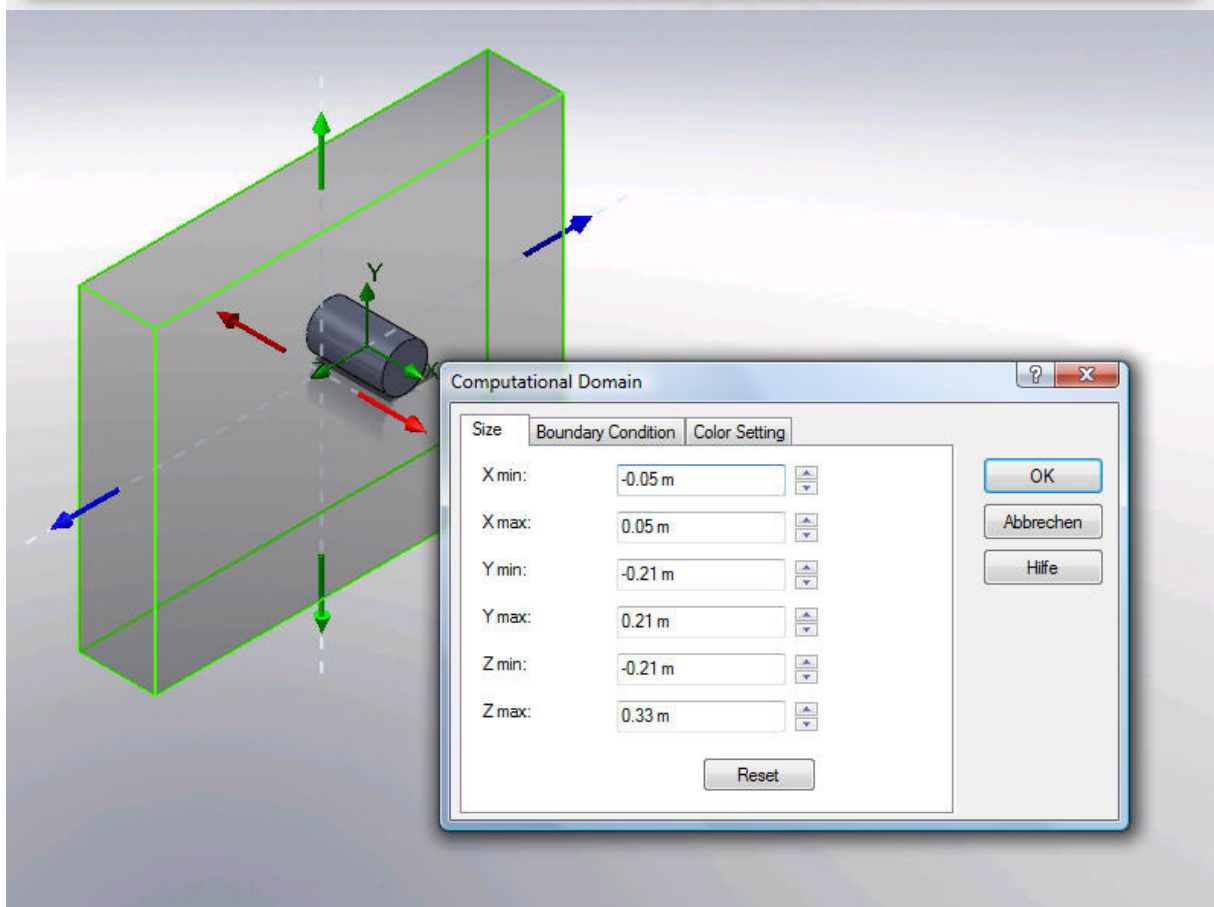
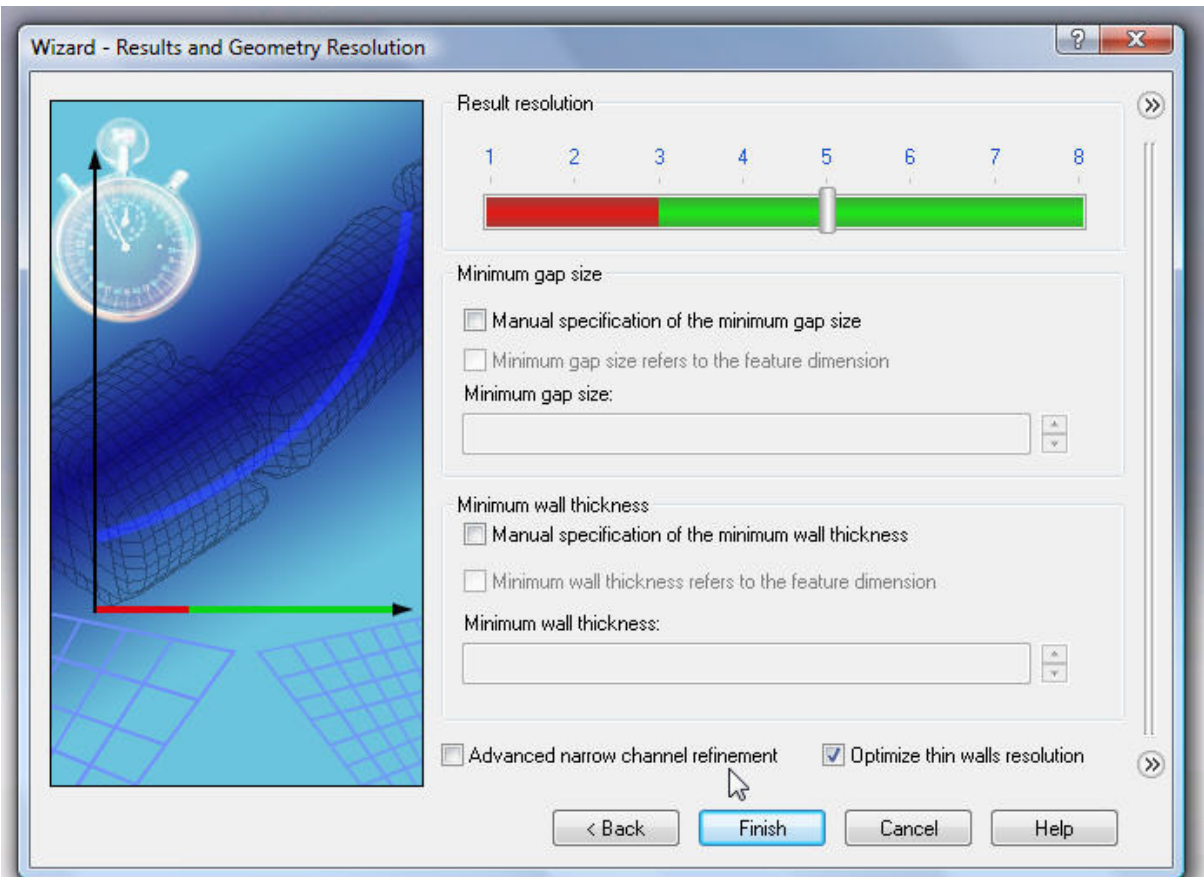
Wizard - Initial and Ambient Conditions



Parameter	Value
Parameter Definition	User Defined
<input type="checkbox"/> Thermodynamic Parameters	
Parameters:	Pressure, temperature
Pressure	101325 Pa
Pressure potential	<input checked="" type="checkbox"/>
Temperature	30 °C
<input type="checkbox"/> Velocity Parameters	
Parameter:	Velocity
Velocity in X direction	0 m/s
Velocity in Y direction	0 m/s
Velocity in Z direction	2 m/s
<input type="checkbox"/> Turbulence Parameters	
Parameters:	Turbulence intensity and length
Turbulence intensity	0.1 %
Turbulence length	0.0006 m
<input type="checkbox"/> Solid Parameters	
Initial solid temperature	60 °C

Dependency...

< Back Next > Cancel Help



Solid Material ?

✓ ✗

Selection

Aufsatz-Linear austragen1

Solid

- Pre-Defined
 - Alloys
 - Steel Stainless 321**
 - Glasses and Minerals
 - Metals
 - Non-isotropic
 - Polymers
 - Semiconductors

Steel Stainless 321

Create/Edit...

Volume Source ?

✓ ✗

Selection

Aufsatz-Linear austragen1

Global Coordinate System

Reference axis: X

Parameter

Q q T

T 60 °C f_{oc}

