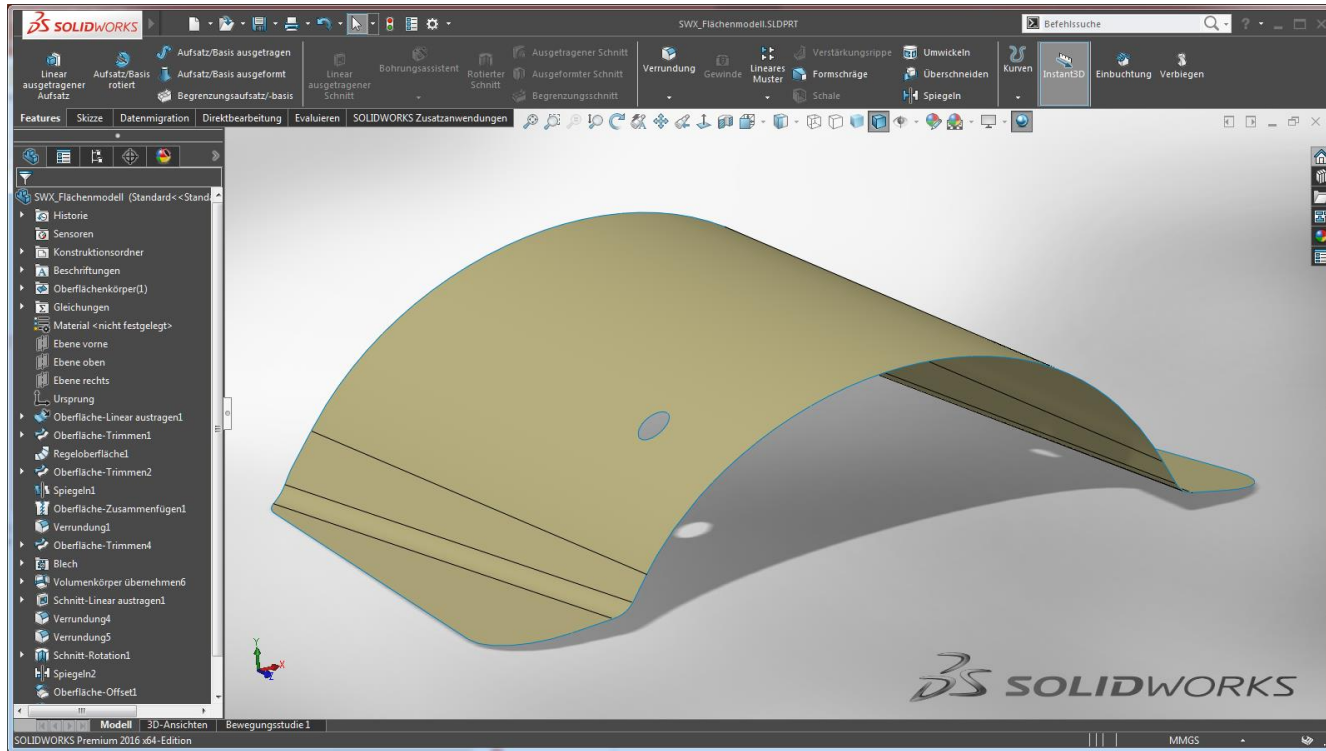


Export 3D DXF

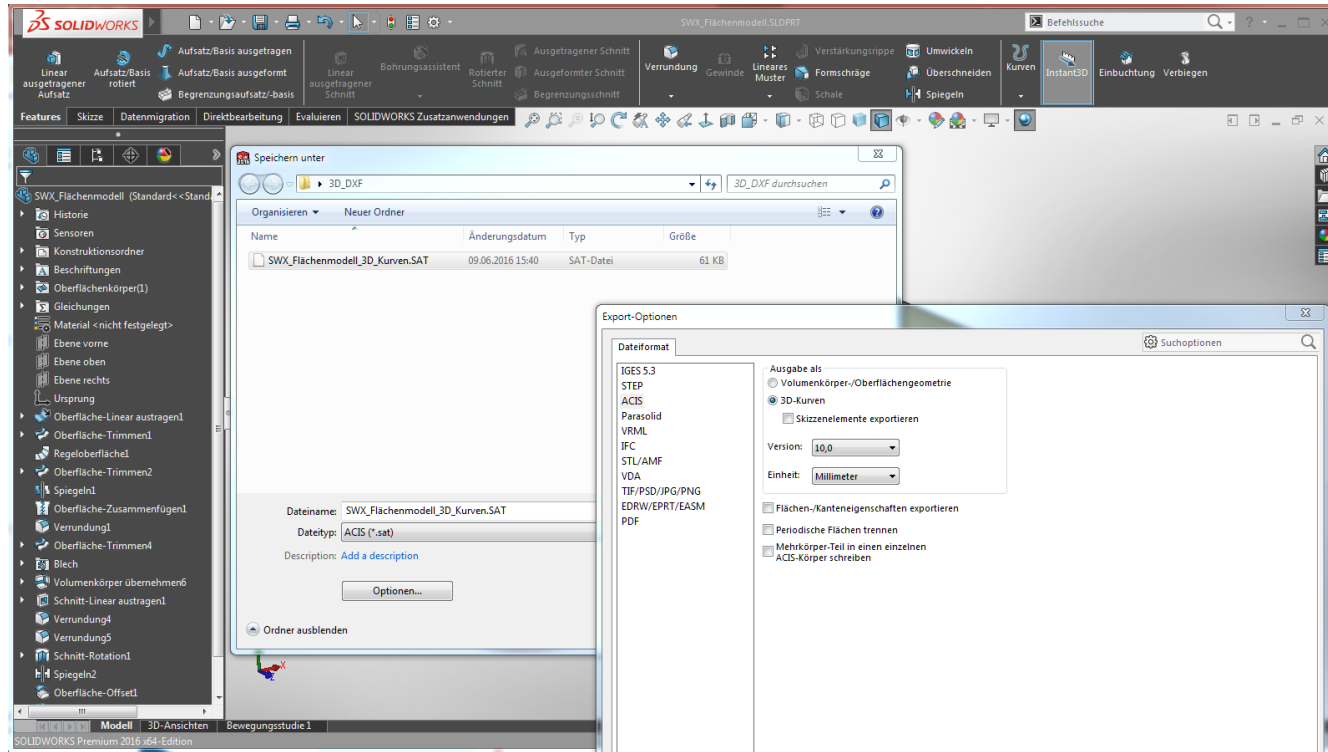


3DEXPERIENCE

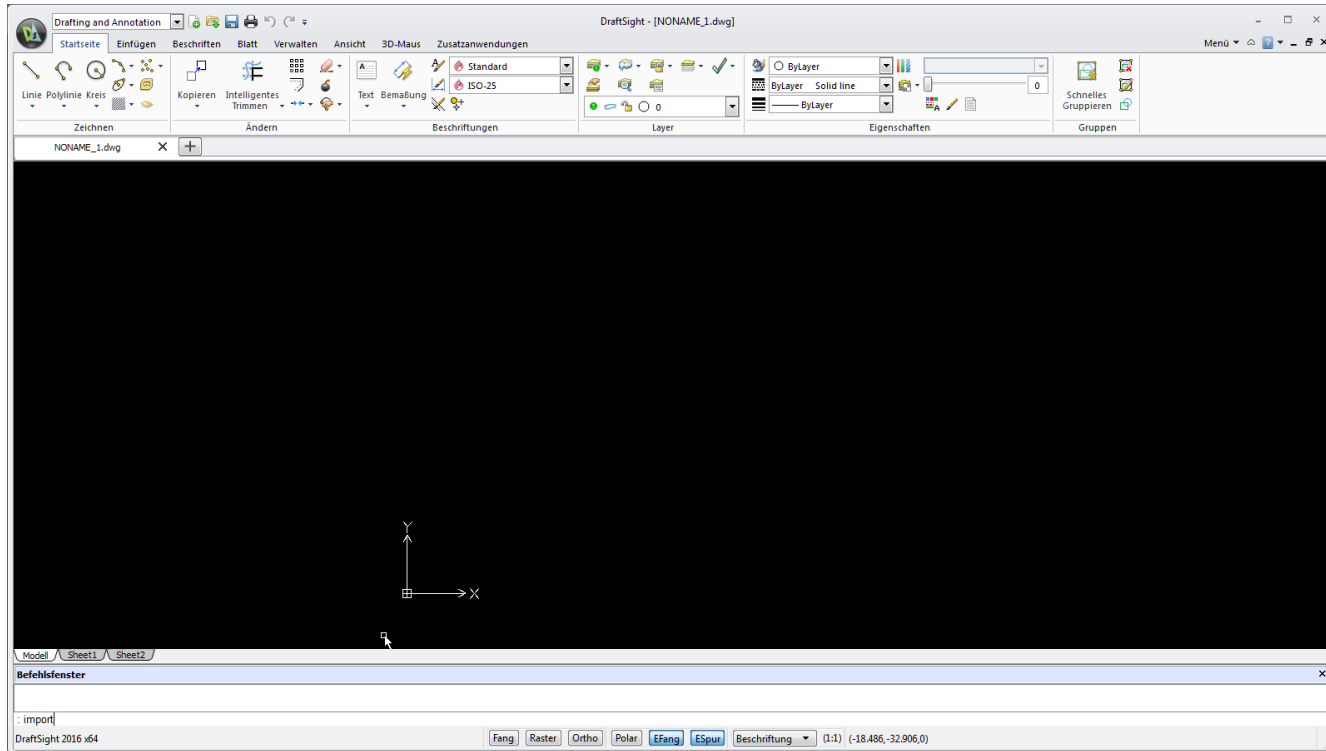
3D Modell in SOLIDWORKS



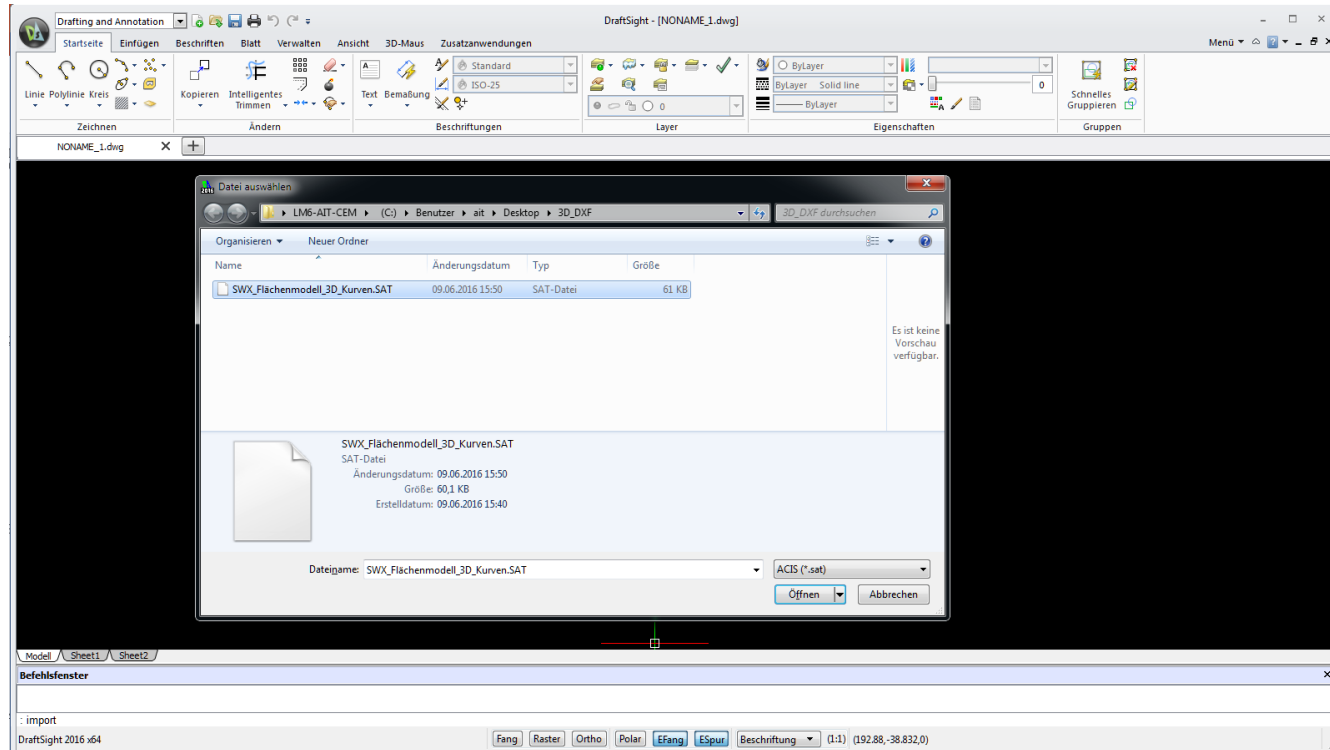
Speichern unter: ACIS



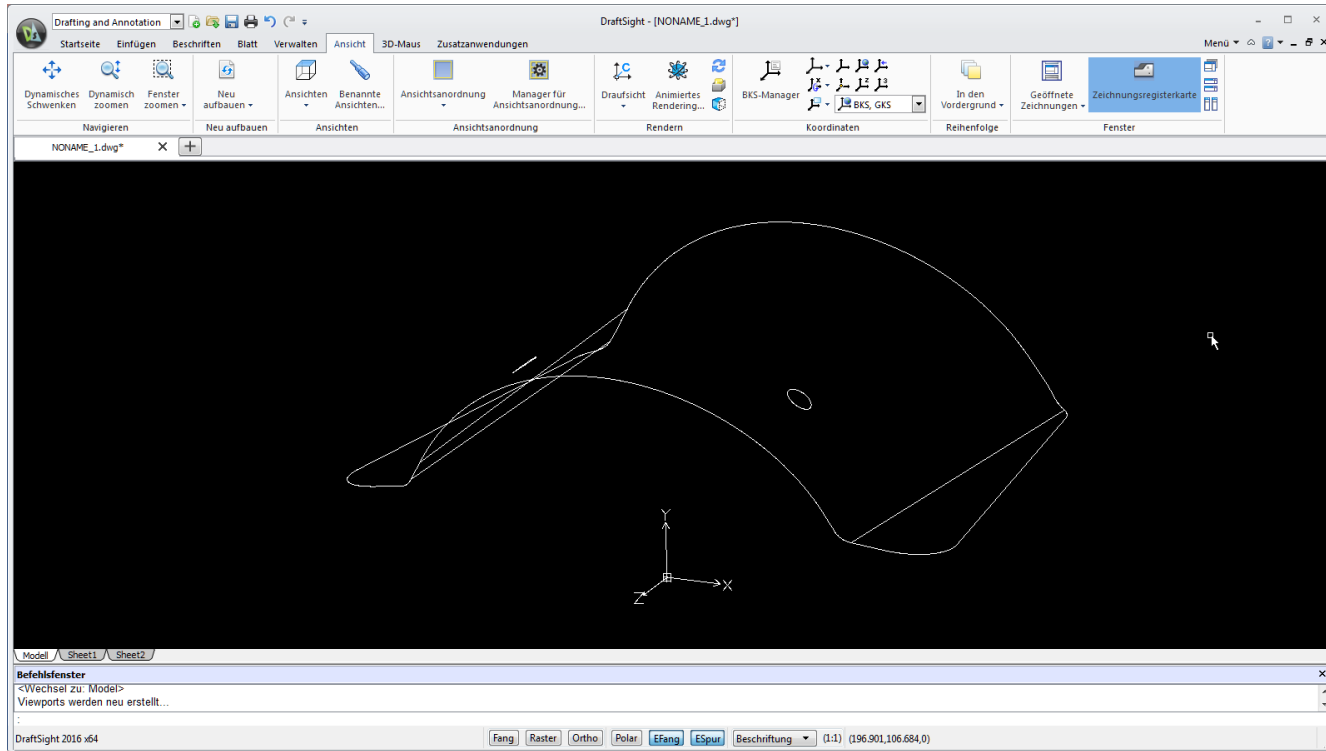
DraftSight: Befehlszeile = import



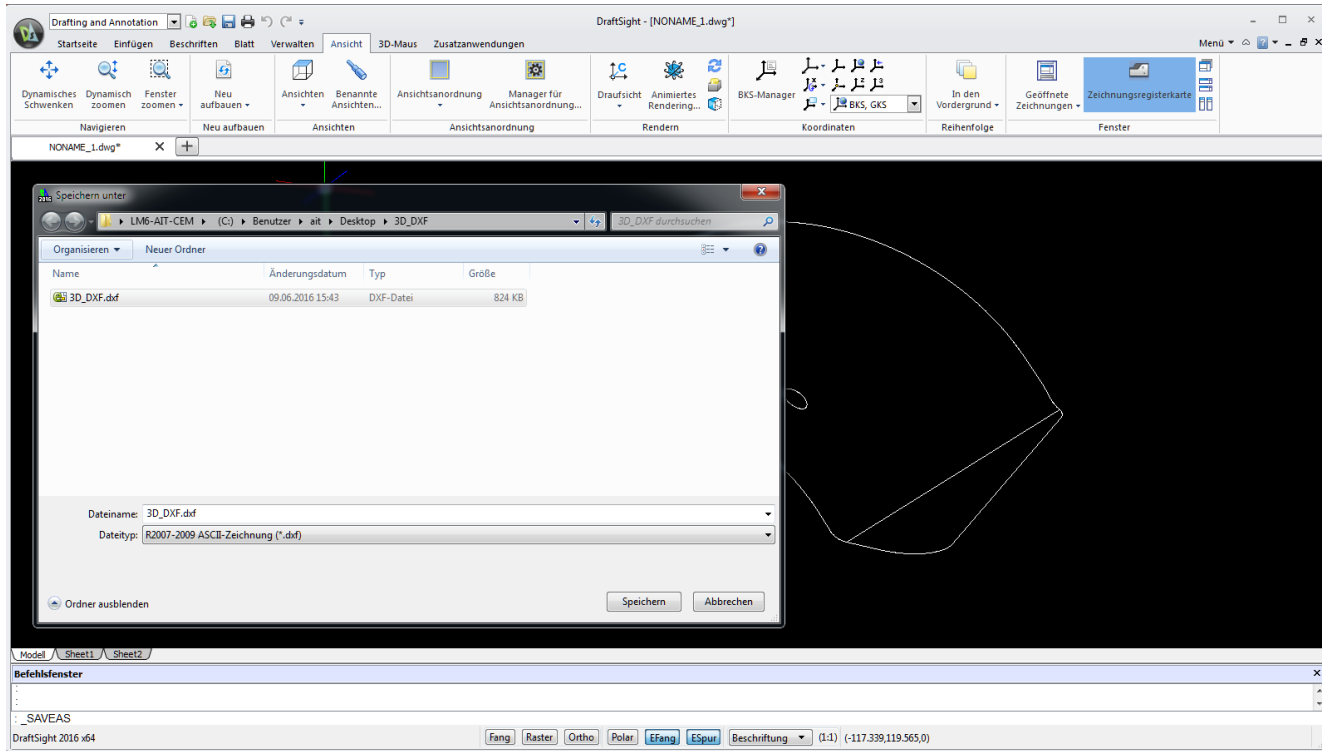
Import



SAT importiert

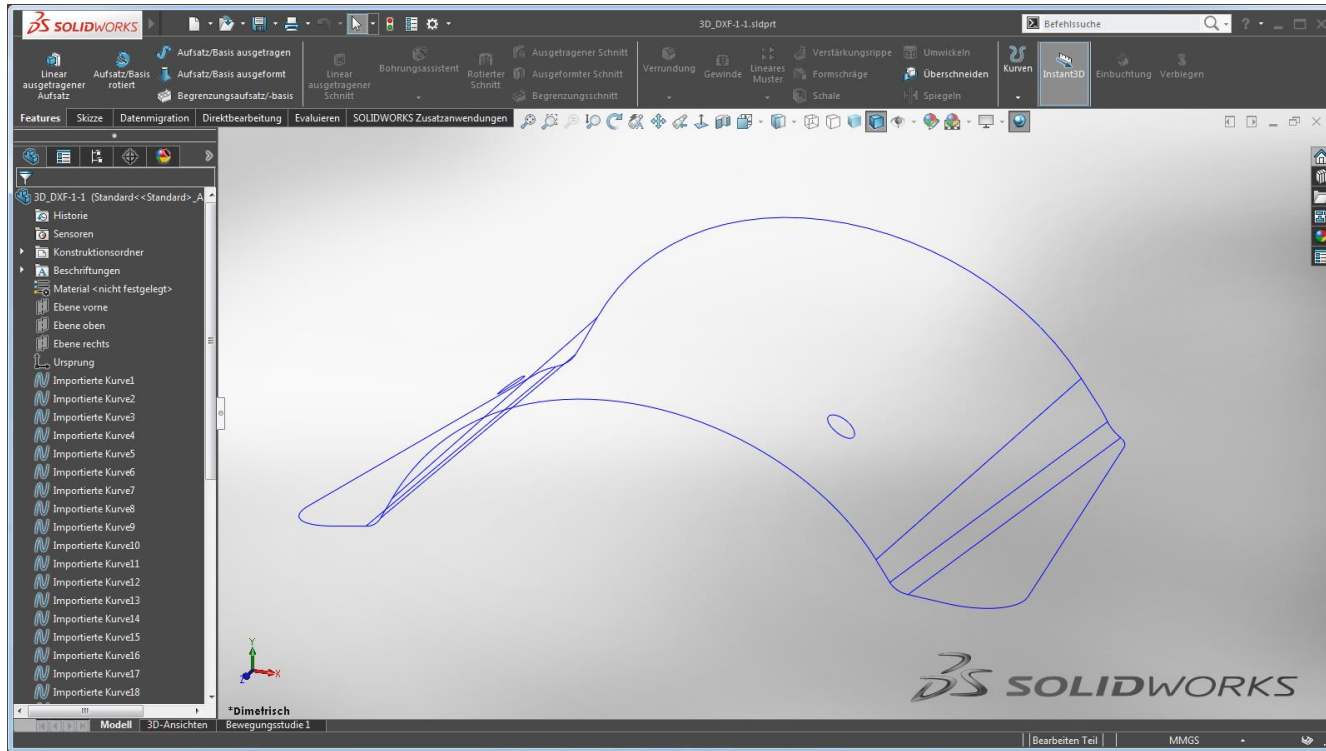


Export nach DXF



3DS.COM/SOLIDWORKS © Dassault Systemes | Confidential Information | 6/9/2016 | ref.: 3DS_Document_2016

3D-DXF zurückimportiert in SOLIDWORKS



3DS.COM/SOLIDWORKS © Dassault Systemes | Confidential Information | 6/9/2016 | ref.: 3DS_Document_2016

