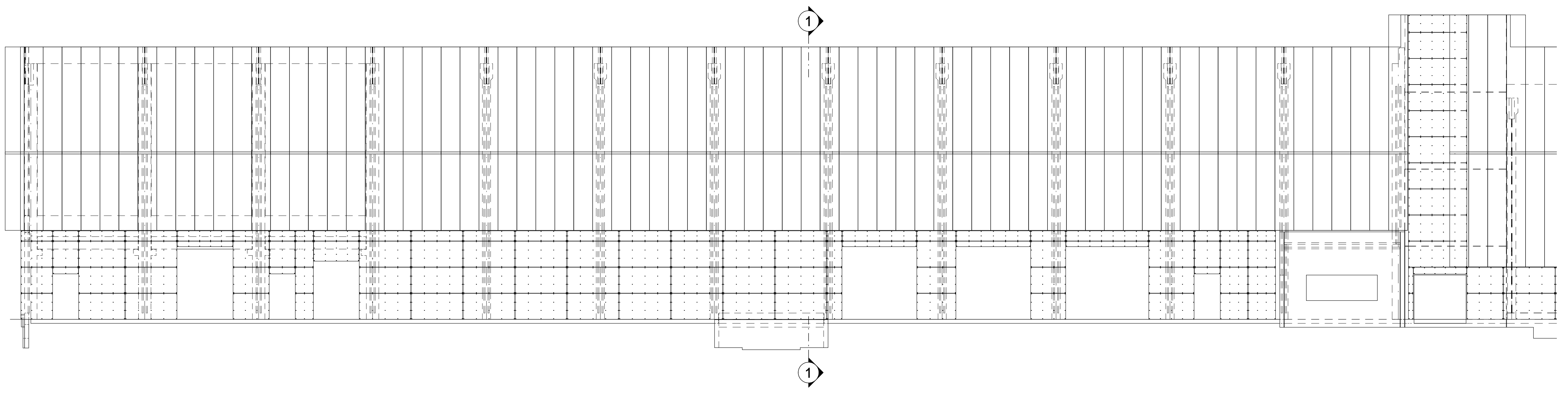
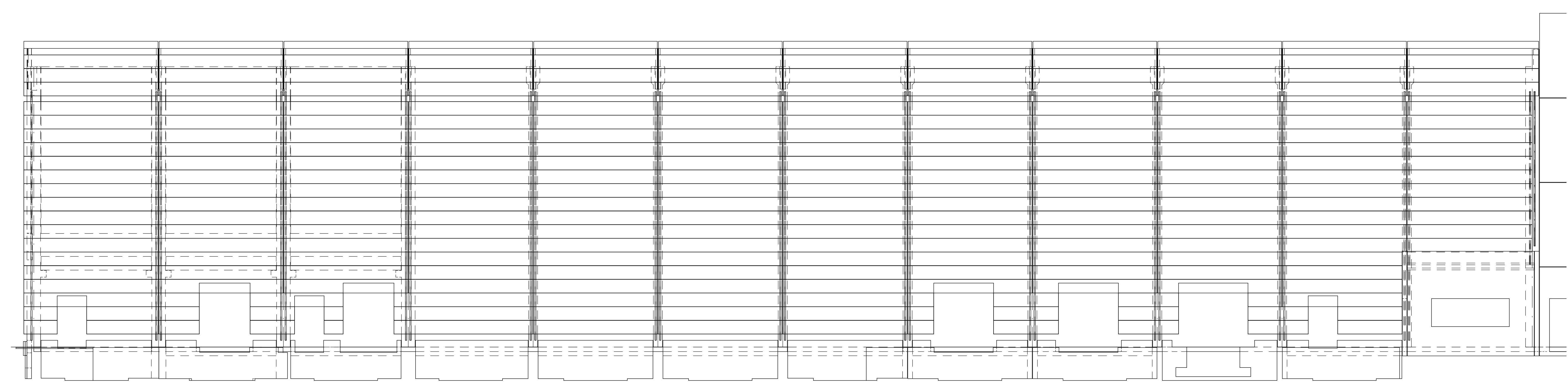


1 - 1  
(1:100)

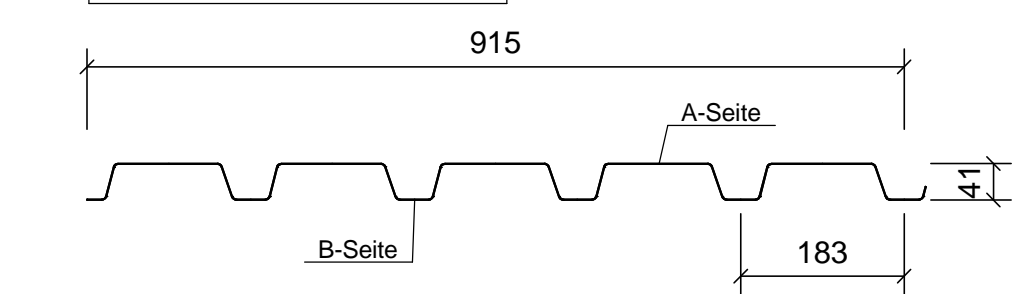
Achse 1/J-P  
(1:100)



Kassette Achse 1  
1:100  
Kassette 160/600-0,88



FASSADE  
 PS 40/183 (0,75 mm) SI  
 A-Seite = SP RAL 9006-25my  
 B-Seite = DU blank RAL 9002 12my  
 Baubreite = 915mm  
 8,20 kg/m²  
 sichtbare Befestigung



Fazermement

8mm  
Farbe: ???  
14,84 kg/Stück

