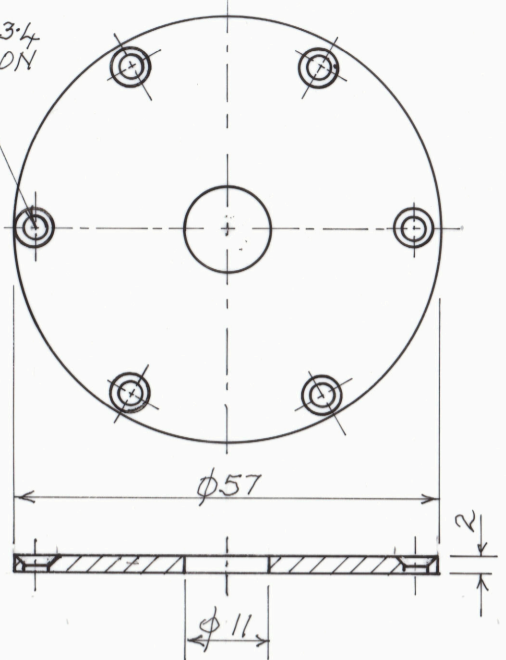


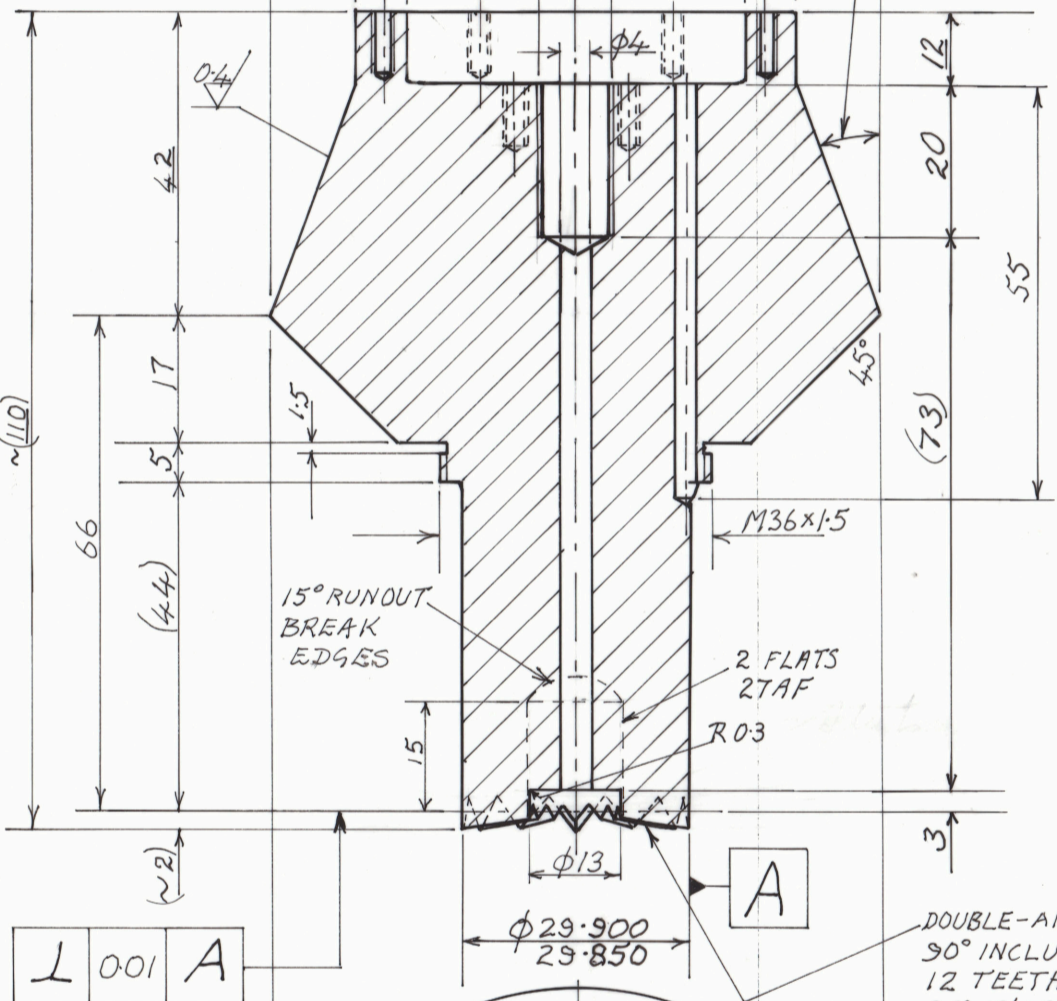
6 HOLES  $\phi 3.4$  EQUISPACED ON PCD 50 C/SINK FOR M3 SCREWS



5A MS BLACK OXIDE FINISH

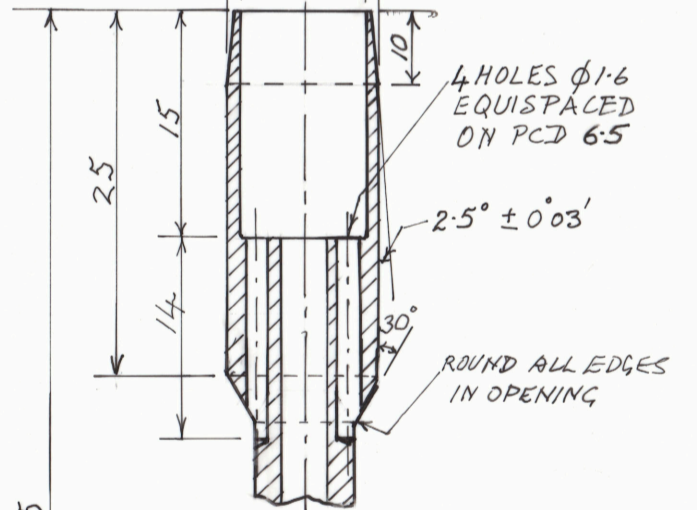
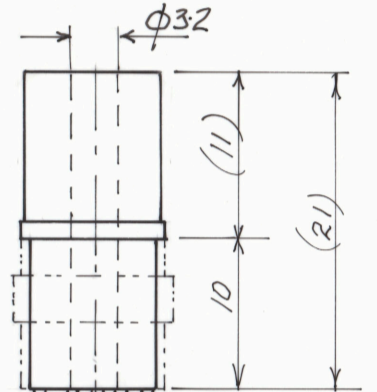
HALF-ANGLE  $20^\circ \pm 0.03'$  TO MATCH (4) DRG 6004

$\text{O} 0.03 A$



L 001 A

5C MODIFICATION TO LEMO CONNECTOR SOCKET INSERT ZNL 2B 308 - TO BE FIXED IN (5B) WITH EPOXY AFTER ATTACHING ELECTRICAL LEADS SHEATHED IN  $\phi 1.0$  D TEFLON MATES TO LEMO CONNECTOR FHG 2B 308 WITH BORE  $\phi 3.2$

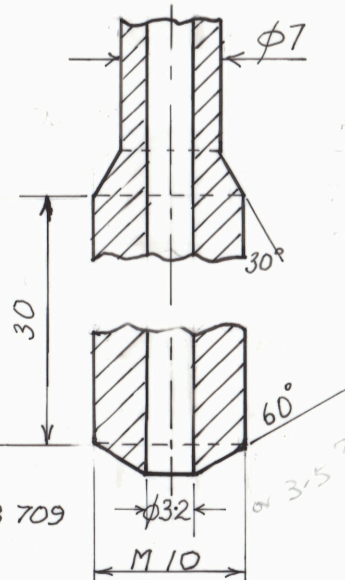


DOUBLE-ANGLE CLUTCH TEETH  $90^\circ$  INCLUDED ANGLE 12 TEETH  $82^\circ 18' 02''$  DIV. HEAD ANGLE (MACH. HDBK. 24<sup>TH</sup> ED. P. 224D) 0.7 FLAT ON TEETH TIPS  $R=0.5$  IN ROOTS TO MATCH (4) DRG 4307

5D SEE DRG 6009

5 ASSAB DRYAR SUPREME HRC  $46 \pm 2$  BLACK OXIDE FINISH

SUPPLY ONE M10 THIN NUT 5B ASSAB 709



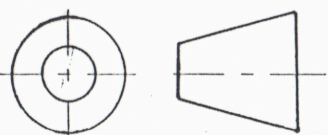
DIMENSIONS IN MILLIMETRES DO NOT SCALE

PATERSON INSTRUMENTS PTY LTD

TOLERANCES  $\pm 0.3$  UNLESS STATED

HPT TESTING MACHINE TORSION ACTUATOR

DETAIL (5) - SPECIMEN DRIVER



ACN 008 644 273

A3	SCALE 1:1 & 2:1	DATE JAN 1995	DRAWING NO 6005
----	--------------------	------------------	-----------------